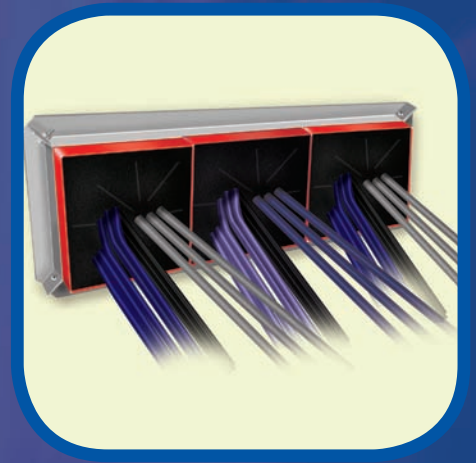
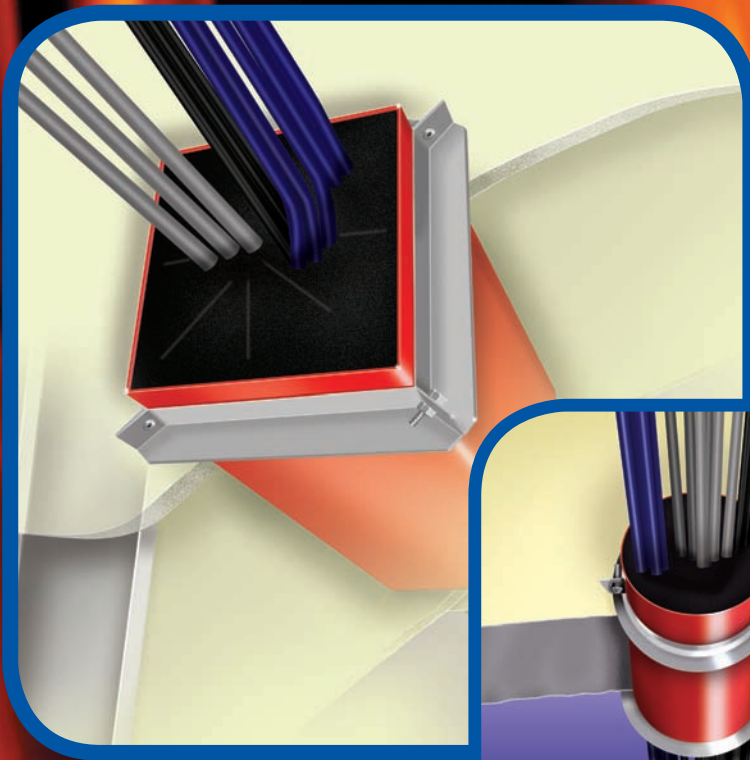


CT120 Cable Transit System

abesco

- Tested to BS EN 1366-3
- Designed for single or multiple cables
- Easy to install and alter cabling
- Use in floors & walls - including drywall
- Easy retrofit design



fireclamp

h i g h p e r f o r m a n c e f i r e s t o p p r o d u c t s

WHAT ARE ABESCO CT120 CABLE TRANSITS?

Part of the Abesco Fireclamp range, the Abesco CT120 Cable Transit device is designed to prevent the spread of fire and smoke from one compartment to another where electrical, data and communication cables penetrate through separating walls and floors.

Abesco CT120 Cable Transits consist of a square or round section steel sleeve, which contains a heat reactive intumescent material. The unit has an integral hinged top that provides an easy retrofit option where cables are pre-installed.

Abesco CT Mounting Flanges provide a quick and easy method of installing single or multiple CT120 Cable Transits....even in drywall partitions. Their unique retrofit design enables them to attach the CT120 Cable Transit in place without the use of mechanical fixings. Various sizes of flange are available to accommodate the square units to be banked together with up to 6 devices.

WHY USE ABESCO CT120 CABLE TRANSITS?

- Approved worldwide and recognised by independent authorities and tested in accordance with BS EN 1366-3, BS 476, AS 1530 and ASTM E-814 (UL 1479)
- Manufactured to ISO 9001:2000
- Corrosion resistant – suitable for use in aggressive environments
- Certification for a wide range of cables
- Available in a range of sizes
- Very easy to install and provides total flexibility in cable routing
- Abesco graphite intumescent is unaffected by moisture
- Same unit for original installs and retro fitting

WHERE DO I USE ABESCO CT120 CABLE TRANSITS?

Abesco CT120 Cable Transits are suitable for use in any building where electrical, data, or communication cables penetrate through fire rated compartment floors and walls, including drywall.

Typical types of buildings where Abesco CT120 Cable Transits are commonly used are:

Banking and finance buildings, data processing centres, TV and media studios, apartment buildings, hotels, office buildings, hospitals, airports, retail centres etc.

WHAT HAPPENS IN A FIRE SITUATION?

When exposed to the heat of a fire, the graphite based intumescent material contained in the Abesco CT120 Cable Transits expands rapidly to close and seal the inside of the sleeve, preventing the spread of fire and smoke from one compartment to another.

HOW TO SPECIFY ABESCO CT120 CABLE TRANSITS

For specification and installation details please refer to Technical Data Sheet

OTHER PRODUCTS

Abesco supply a wide range of Firestop products, which provide the specifier, engineer, and contractor with cost effective solutions to most passive fire protection problems, experienced on today's construction projects.

- Pipe Collars
- Pipe Wraps
- Fire Rated Mastics
- Fire Rated Expanding Foam
- Fire Rated Pillows
- Fire Rated Boards for multiple service penetrations
- Fire Rated Movement Joints
- Intumescent Fire Dampers
- "Protecta WB" system - Intumescent paint for structural steel protection

NON STANDARD MANUFACTURING AND TESTING

Abesco products can be manufactured to meet project specific requirements where standard production specifications may not fulfil all a client needs. For example, size and fixing variations can be accommodated, and special design facilities are available.

HOW DO I ORDER?

Your local supplier is:

Abesco Ltd., Abesco House,
Laurencekirk Business Park,
Laurencekirk, AB30 1EY, Scotland, UK
Tel: +44 (0)1561 377766 Fax: +44 (0)1561 378887
info@abesco.net

Abesco LLC
Unit 325,
9561 Satellite Blvd.
Orlando, FL 32837

www.abesco.net

